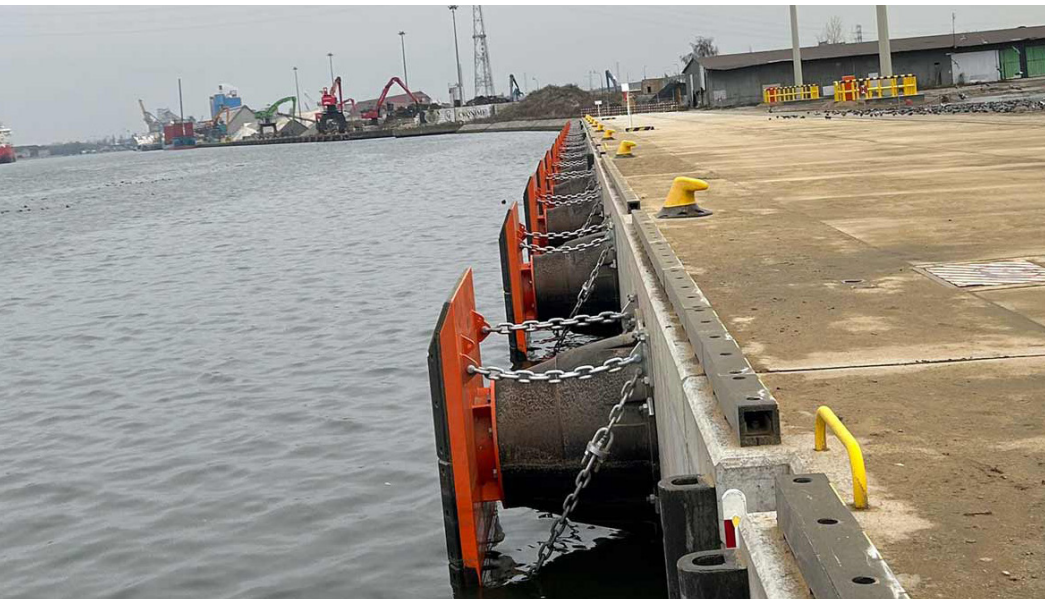


## Engineered for Different Load Cases

Bytomskie Quay, Gdansk, Poland



**Application**  
Bulk Terminals

**Type**  
SPC Cone Fenders

**Date** 2026

**Reference** 6164

### A CLOSER LOOK AT THE CASE

The Port of Gdansk, located on the eastern bank of Kanal Kaszubski, continues strengthening its operational capabilities through the **reconstruction and extension of Bytomskie wharf**. The upgraded **204 m-long quay** was developed as a multipurpose berth designed to accommodate larger vessels and heavier cargo operations, significantly increasing handling capacity and operational flexibility.

Construction work for the Bytomskie Wharf expansion was carried out by PORR. ShibataFenderTeam designed, manufactured, and delivered 20 Cone Fender Systems (SPC 1200), each equipped with closed box steel panels (2300x2700 mm), as well as 10 Extruded Fenders (DD 200x200 mm). The scope of supply also included 10 T-Head Bollards with 100-t capacity. **SFT supplied all items ahead of the agreed schedule**, contributing to the timely completion of the project.

#### Project Scope

- ▶ 20 Cone Fender systems (SPC 1200, G1.3) with closed-box steel panels (2300 x 2700 mm)
- ▶ 10 Extruded Fenders (DD 200 x 200 mm)
- ▶ 10 T-Head Bollards with 100t

## CHALLENGE AND SOLUTION

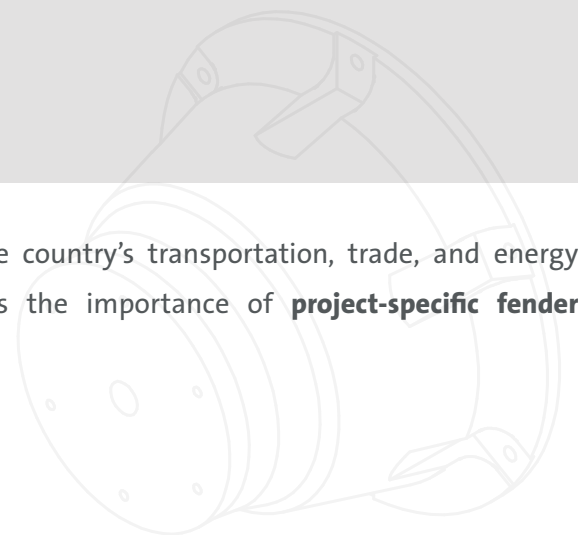
The fender design presented several challenges, particularly regarding the performance requirements of the fender panels. SFT's in-house engineering team considered **various load cases**, including **line loads**, **double contact scenarios** and **low-impact berthing conditions**. This resulted in a customized solution tailored to the operational demands of the multipurpose berth.

The approval process included specific project requirements and physical performance criteria to ensure **compliance with the latest ISO standards**. In addition, SFT supplied rubber test plates to facilitate local verification testing.



Bytomskie Quay | Gdansk | Poland

As the Port of Gdansk continues expanding its role within the country's transportation, trade, and energy infrastructure, the Bytomskie Wharf modernization highlights the importance of **project-specific fender engineering for safe berth operations**.



The upgraded 204 m-long multipurpose berth in the Port of Gdansk required Fender Systems engineered for various load cases. Explore more SFT Case Studies or Contact Your Nearest Office.

